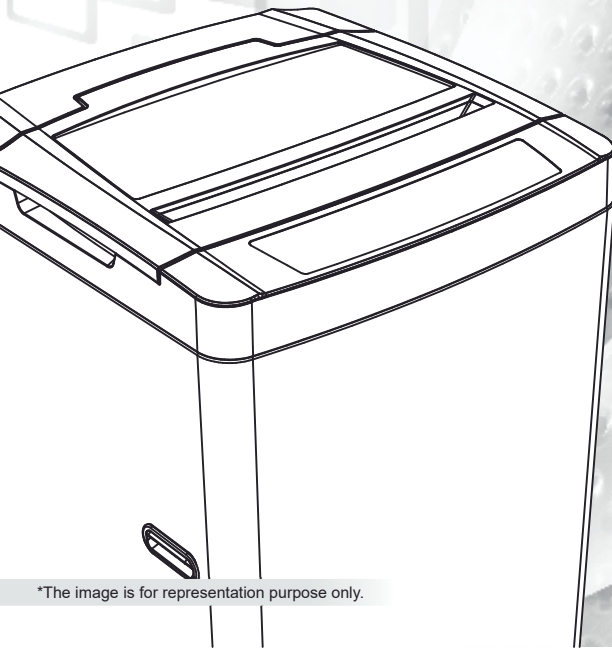


HOW TO GET THE BEST OUT OF YOUR
GODREJ WASHING MACHINE...



Fully automatic top load

User Manual

WTEON ARG 70 5.0 FNTNS
WTEON 700 A 5.0

*The image is for representation purpose only.



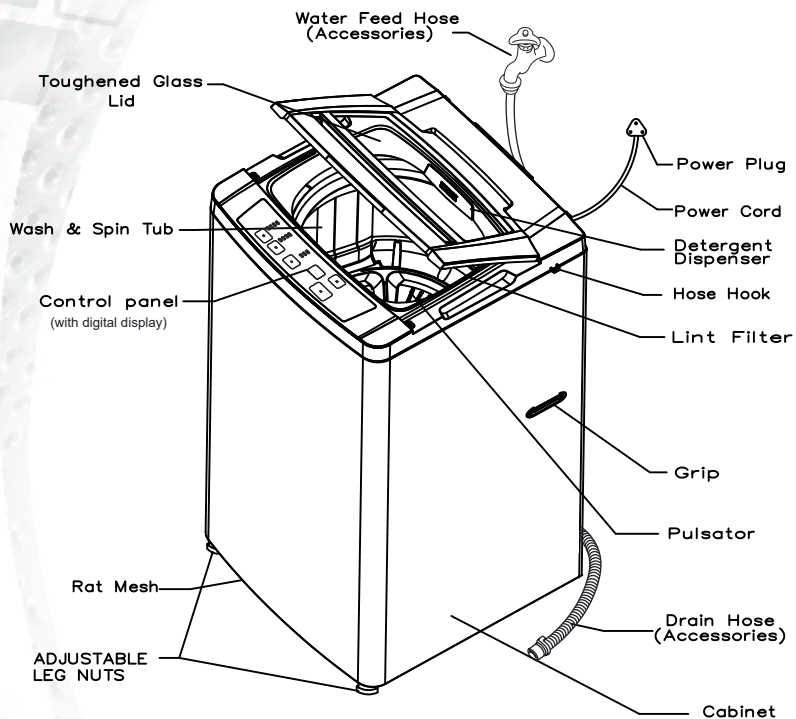
Congratulations!

You are now the proud owner of a new Godrej Washing Machine. You can look forward to years of smooth, trouble-free washing from your machine, as well as considerable savings in time, money and effort. Please read this manual carefully as it will tell you how to operate your machine optimally in order to get the best results. If you need any further clarifications, do contact your nearest Godrej dealer or any of our service centres/ offices. We would be glad to help you. We wish you an easier, more convenient life with your new Godrej Washing Machine.

CONTENTS

• Description Of Parts	1
• Specifications	2
• Know Your Washing Machine	3
• How To Install	4
Choosing the right location	
Step-by-step installation	
Ensuring proper earthing	
Installing the drainage hose	
Attaching the water supply hose to the tap	
Connecting the water supply hose to your machine	
• Description And Operation: Control Panel	9
• Washing Operations	11
• Selective Washing Processes	12
• How To Select Water Level And Load Size	13
• How To Measure Wash Load	14
• How To Operate	15
When washing using auto cycle	
When washing blankets	
• Washing Tips	17
• Safety Instructions	18
• How To Maintain	19
Water inlet	
Washing machine body	
Lint collector	
• When Do You Call The Service Person	20
• Don't Worry When	21
• Trouble Shooting	22
• Environment & Energy Conservation Suggestions	23
• Branch Address/Service Connect	24
• Warranty	25

DESCRIPTION OF PARTS



*The image is for representation purpose only.

SPECIFICATIONS

Model	WTEON ARG 70 5.0 FNTNS WTEON 700 A 5.0	
Capacity	7 kg	
Power source	230V, 50 Hz, 5A	
Power consumption	425 W	
Water consumption	Regular cycle (Auto cycle): 180 L at Max water level	
Water pressure	0.5-10 kg/cm ²	
Wash tub	Inner Wash Tub	Stainless Steel
Net dimensions (W×D×H)	565 mm X 565 mm X 910 mm	
Net weight	29.5 kg	

*In the view of Godrej policy of continuous development, specifications may change without notice.

KNOW YOUR WASHING MACHINE

This washing machine has unique features to make your washing very convenient.

1. Auto Logic Control

The intelligent micro-controller controls all operations precisely to ensure a perfect wash. The machine is equipped with fuzzy load sensing to determine the water level for the wash load. Washing, rinsing and spin drying happens with a single selection on the control panel.

2. Unbalance Load Corrector

The Godrej Washing Machine automatically corrects a load unbalance that might occur during the spin cycle. This protects the machine from damages.

3. Rat Mesh

The rat mesh is provided to protect your machine from damages due to rodent entry.

4. Memory Backup

During program operation if there is a power failure, the machine memorises the program operation. On restoration of incoming power, the machine will resume from exactly where it was stopped due to power failure for the remaining operation.

5. Child Lock

This feature allows machine keys to be locked during operation. This prevents unintended changes during a wash cycle.

HOW TO INSTALL

Choosing the right location

Removal of packaging materials

- Please ensure all packaging / bottom cushion to be removed from the machine before starting machine.
- **CAUTION:** Operating the machine with the packaging may cause movement/unbalanced condition and can damage the machine parts.
- Install your Godrej EON Washing Machine on a flat and firm surface.
Max tilt angle on the supporting face : 1°.
Installing machine on an unstable location can create noise as machine may vibrate. This can be dangerous since vibrations may cause the machine to move.
- Keep a distance of at least 10cm between the sides and rear of your machine to the nearest wall.
- Do not place your machine in an area with high humidity or direct exposure to sunlight or rain.

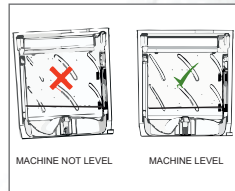
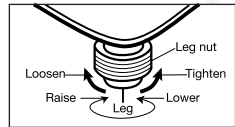
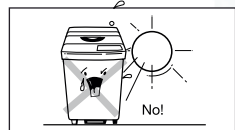
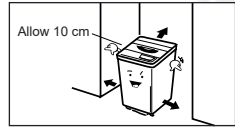
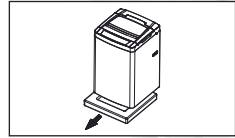
This can

- Result in insulation damage
- Cause deformation or discolouration of the plastic parts

Step-by-step installation

The front two legs can be adjusted so that the machine is on level with the ground.

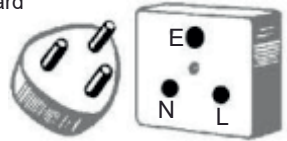
- After loosening the adjusting nut, adjust the leg to the correct height by turning it. Then tighten the adjusting nut securely.
- If the leg height is difficult to adjust because of an extremely uneven floor, place a board underneath and bring it to a level position
- To check whether your machine is in level open the lid of machine, pour water into the tub up to the level just above pulsator and check if the water level matches with steel drum holes along the periphery.
 - **Trolley is not recommended.**
 - If a trolley is used it should be a metallic trolley with four adjustable legs and with proper locking to avoid movement during function of machine.



HOW TO INSTALL

Connecting the Electrical plug of your washer to Wall Socket

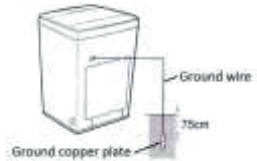
- Connect the 3-pin power cord to a properly grounded Standard Indian 3-pin outlet. Never plug it into an ungrounded outlet.
- If the external socket does not have grounding terminal, then a separate grounding is needed.
- Live and neutral terminals in Socket should not be reverse.



SEPERATE GROUNDING METHODS (ANY ONE TO BE FOLLOWED)

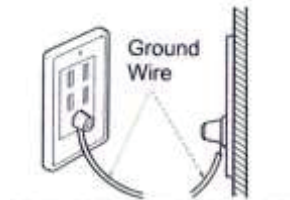
- Burying copper plate:

Connect the Ground Wire to a Ground Copper Plate and bury it more than 75cm in the ground.



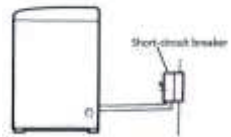
- Using Grounding Wire:

Connect the Ground Wire to the socket provided exclusively for Grounding.



- Using a short-circuit breaker:

If Grounding methods described above are not possible, a separate circuit breaker should be employed and installed by a qualified electrician.



*The images are for representation purpose only.

Never connect ground to:

A Gas pipe, Telephone wire, lightning rod, Neutral, Extension cords without ground terminals, plastic, etc.

Note: All electrical wirings or modifications should be done by a qualified electrician only.

HOW TO INSTALL

Installing the drain hose

- Insert the drain hose in as far as it will go, then secure it tightly with the hose clamp. An improperly secured hose may leak.
- While attaching the drain hose to a wash pan, leave a gap between the end of the hose and the adjacent surface. If the flat end of the hose comes in contact with a flat surface, drainage will be affected.

Caution: If the drain hose is not installed properly, your washing machine may not function well, and the overflow prevention mechanism may cause your machine to stop in mid-cycle.

- While inserting the drain hose into a wash pan or drain pipe, move the hook for easier installation
- Move the hook back to its initial position before placing it in the slot provided on the side of your machine
- Make sure the drain hose is not too high, otherwise it may not drain properly

Installing the Rat Mesh

- Tilt the washer on one side & match the outline of the rat mesh with the bottom front side of the machine as shown in Fig. 1
- Insert the rat mesh as shown in Fig. 2 & screw it to the base as shown in the picture

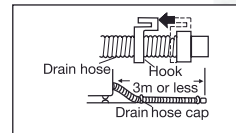
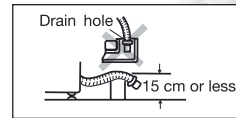
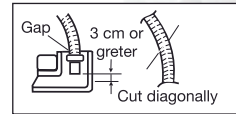
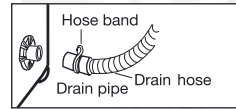


Fig. 1

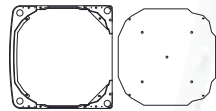
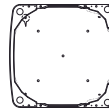


Fig. 2

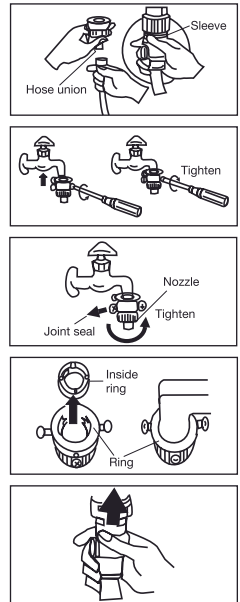


*The images are for representation purpose only.

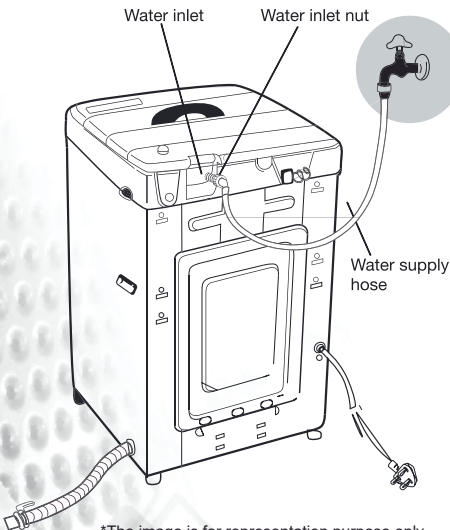
HOW TO INSTALL

Attaching the water supply hose to the tap

- Pull the sleeve down with your fingers as you lower the entire hose to disconnect the union
- Loosen the four screws on the hose union and then fit the union exactly over the mouth of the tap
- Tighten the four screws evenly around the tap
- Remove the seal from the union and turn the nozzle to tighten securely (if the tap is large, square or oddly shaped, remove the inside ring to facilitate attachment)
- Grip the ring with your hand and pull it down, and then insert the nozzle. Separate the sleeve until you hear a click, and then push it back.
- After installation, check to ensure that the union does not come off while pulling down. Next, confirm that the union is properly installed by turning the water on and checking for leakage. If you see any leakage, adjust the section where there is a leakage.



*The images are for representation purpose only.



*The image is for representation purpose only.

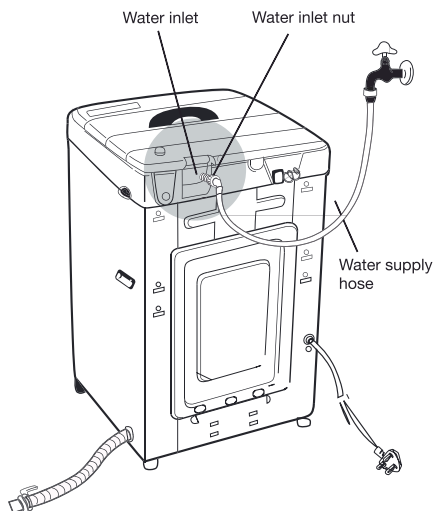
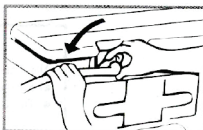
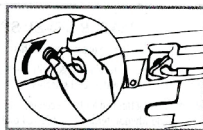
Caution:

- Do not use a tap with a diagonal mouth or a movable tap since this may leak

HOW TO INSTALL

Connecting the water supply hose to your washing machine

- Turn the hose nut clockwise and tighten it on the end of the water supply hose securing it to the water intake valve
- Tighten further by turning the water supply hose and water intake valve in the unable to find direction of the arrow as shown in below image.
- Hold the hose nut firmly. Turn the water supply hose back again in the unable to find direction of the arrow as shown.
- Repeat steps 2 and 3 above, and tighten until you find it difficult to turn the water supply hose further

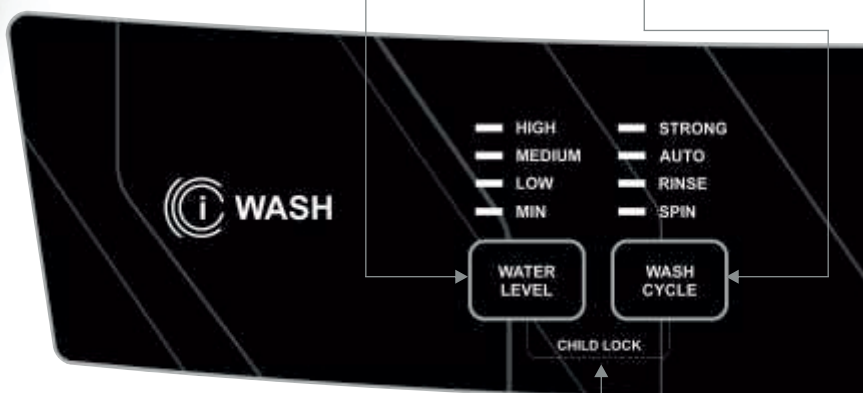


*The image is for representation purpose only.

DESCRIPTION AND OPERATION: CONTROL PANEL

Water Level Button: Used to select the required water level manually.

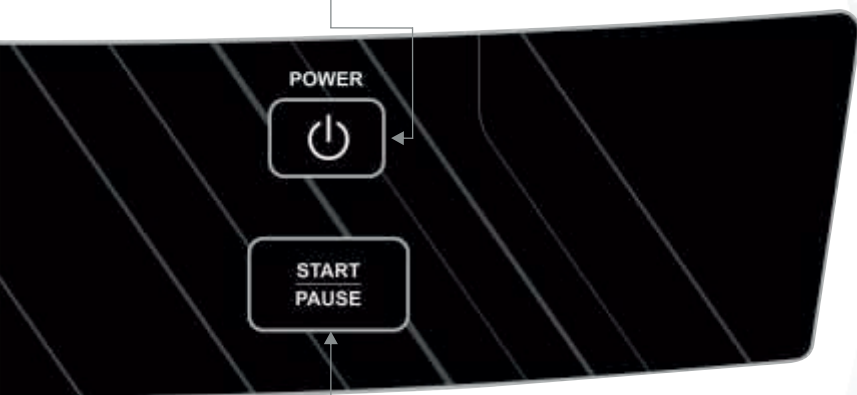
Wash Cycle Button: Used to select wash cycles as per requirement. By default auto cycle selected.



Child Lock: Child lock can be activated by pressing Water Level and Wash Cycle buttons simultaneously for 2 seconds. During operation, once Child Lock is activated, Min water level LED and Spin LED will glow together. During Child lock, all the control panel buttons are inactive. Child Lock will be deactivated automatically after completion of wash cycle or power OFF/ ON. Child Lock can be deactivated by pressing water level and wash cycle button again for 2 seconds.

*The images are for representation purpose only.

ON/ OFF Button: Used to ON or OFF the machine.



Start/ Pause Button: Start the washing machine operation when pressed. Pressing this button a second time will cause the machine to pause.

WASHING OPERATIONS

WASHING PROGRAM	PROCEDURE FOR SETTING WASH CYCLE	PROCESS				APPROX. TOTAL WASH TIME
		WASH (min.)	RINSE 1 (min.)	RINSE 2 (min.)	SPIN (min.)	
Auto Cycle	<ul style="list-style-type: none"> • Turn POWER ON Button (Auto cycle gets selected automatically) • Press Start/ Pause button to start the machine • Water level and wash time is automatically selected by the machine, if not selected manually • By default auto program cycle is set from factory 	15 min (wash + in-built soak)	10-13	10-13	9-11	52-60*
Strong Cycle	<ul style="list-style-type: none"> • Turn POWER ON button (Auto cycle gets selected automatically) • Press wash cycle button to select strong cycle • Medium water level is automatically selected by the machine, if not selected manually • Press water level button to select desired water level based on cloth load • Press Start/ Pause button to start the machine 	15 min (wash + in-built soak)	10-13	10-13	9-11	51-59*

Note: Timings may change due to reasons like water inlet pressure variations.

Energy label declaration program - 'Strong' - by default water will be 'High' for energy program.

User can change the water level - at any other water levels, energy rating will be not considered.

SELECTIVE WASHING PROCESSES

SELECT PROCESS	OPERATION	PROCESS CYCLE
Rinse Only	<ul style="list-style-type: none"> • Press the Power ON button • Press wash button to select Rinse option • Press Start/ Pause button to start Rinse only 	<p>Begins with Drain – Spin – Rinse 1 – Drain – Spin – Rinse 2 – Stop without Draining with End of cycle Beeps.</p>
Spin Only	<ul style="list-style-type: none"> • Press the Power ON button • Press wash cycle button to select Spin option • Press Start/ Pause button to start Spin only 	<p>Begins with Drain cycle – Spin – Stops with End of cycle Beeps.</p>
Rinse + Spin	<ul style="list-style-type: none"> • Press the Power ON button • Press wash cycle button to select Rinse & Spin option • Press Start/ Pause button to start Rinse & Spin 	<p>Begins with Drain – Spin – Rinse 1 – Drain – Spin – Rinse 2 – Drain – Spin – Stops with End of cycle Beeps.</p>

HOW TO SELECT WATER LEVEL AND LOAD SIZE

HOW TO USE WATER LEVEL		
Water Level Setting	Weight of Clothes	Example of Load
HIGH	3.1 - 7 kg.	3 Trousers, 4 Shirts, 2 Skirts, 2 Night Gowns, 1 Towel, 4 Vests, 2 Sarees, 2 Dhori, 2 Blouses and 2 Petticoat.
MEDIUM	1.51 - 3 kg.	3 Trousers, 2 Shirts, 2 Skirts, 1 Night Gown, 1 Towel, 3 Vests, 1 Saree, 1 Dhori, 3 Blouses and 1 Petticoat.
LOW	0.81 - 1.5 kg.	1 Trouser, 1 Shirt, 2 Vests, 1 Night Gown, 2 Blouses and 3 Skirts.
MIN.	0 - 0.8 kg.	1 Trouser, 2 Shirts, 2 Vests, 2 Undergarments and 1 Blouse

While deciding the water requirement for the wash load, check the weight of the clothes and volume occupied by them.

HOW TO MEASURE WASH LOAD

Here are some of the average weights of commonly used clothes, to help you estimate the weight of the load to be washed.

APPROXIMATE WEIGHT OF CLOTHES			
Item of Clothing	Weight (in gms.)	Item of Clothing	Weight (in gms.)
Double Bedsheet	1000	Single Bedsheet	500
Bath Towel	500	Table cloth	650
Trouser	400	Jeans	600
Shirt	300	Baggies	500
Saree	500	Petticoat	400
Skirt	250	Pyjamas	400
Dhoti	200	Lungi	225
Night Gown	250	Blouse	100
Vest	50		
Undergarment	50		

While deciding the water level requirement for the wash load, check the weight of the clothes and volume occupied by them.

HOW TO OPERATE

When using the Auto Cycle:

Preparation

- Ensure that the electrical plug is properly connected.
- Ensure that the water supply and drain hose are correctly installed.

Put detergent into detergent compartment and laundry in the basket.

Turn the power ON

- Close the lid and turn the POWER key ON.

Start the cycle

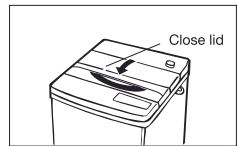
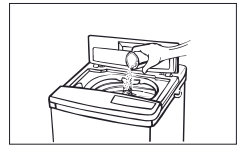
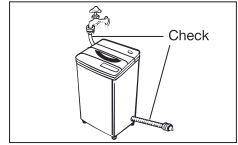
- Press the START/ PAUSE key to start the machine.
- The machine will run through a full cycle, including RINSE and SPIN.

Cycle End

- A buzzer will signal the end of the cycle
- Turn OFF the water tap
- Machine will switch OFF after the completion of the cycle
- Turn OFF the Mains Power Supply and disconnect the Main Power Plug

Auto calibration for auto load sensing:

Due to aging, the mechanical friction changes on motor belt tension and other mechanical parts. Hence it is required to calibrate the machine for auto load sensing. Calibration can be done by pressing Start/ Pause button and Power button together for 2 sec. and machine will perform the calibration automatically. The auto calibration should be started with empty tub i.e. without water and clothes inside the tub.



*The images are for representation purpose only.

HOW TO OPERATE

When washing using blankets

Types of blankets which can be washed

Material	100% synthetic fibre
Weight	3 kg. or less (Use the auto cycle when the load is less than 2 kg.
Size	140 cm x 200 cm or less
Thickness	Single layer

Turn the power ON.

- Select the STRONG program with LOW water level selection. Add the detergent in detergent compartment and press the Start/ Pause button to allow the water and detergent to mix for about one minute. After one minute passed, turn the mains power switch OFF to stop the machine.
- Place the blanket into the basket. Press it in all the way to down by hand, ensuring that it is fully immersed in water.
- Restart the machine by switching mains ON power switch
- After restarting, cycle will automatically start to run in STRONG program
- Select the water level as per requirement and wait for cycle to complete

Cycle End

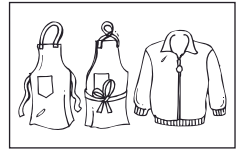
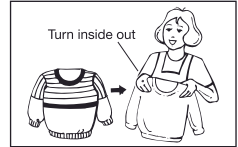
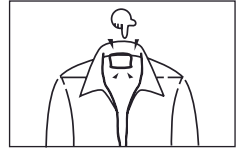
- A buzzer will signal the end of the cycle
- Turn OFF the water tap
- Machine will switch OFF after the completion of the cycle
- Turn OFF the Mains Power Supply and disconnect the Main Power Plug

WASHING TIPS

- Follow the instructions on the garment labels while washing laundry items. Avoid washing of all natural woolens and delicate knits such as lace knits.
- Turn garments inside out when washing to avoid piling and lint
- Strings and fasteners of aprons and pillow cases should be fastened or tied

For hard-to-clean shirt collars and sleeves:

- Apply detergent to the soiled part of the garment and scrub by hands
- If a garment is exceptionally soiled, soak it in liquid detergent for about 10 minutes before washing
- Add clothing one by one, remove hooks, pins etc. and pull up all zips. If the hooks cannot be removed then tie all of them up in one garment



*The images are for representation purpose only.

SAFETY INSTRUCTIONS

- Always use a proper power source
- Do not use extension cords as these may not be properly earthed
- Before connecting the power cord make sure to ground otherwise it may cause electric shock
- Never use damaged electrical cords or plugs
- This washing machine should be connected through a switch or a 5A MCB so that it can be disconnected from power supply
- Use a secure tap connection to avoid leakage and wastage of water
- Never place your hand in the basket while it is moving! Do not place your hand under the machine while it is operating. (Touching any of the machine's moving parts can be dangerous, even if it is moving slowly.)
- Do not press control panel pads with sharp objects. Using sharp objects to press the panel pads can result in electrical shocks or malfunctions
- Do not pull the power cord with moist hands
- Do not get the control panel wet. Getting the operation panel wet can result in shocks or malfunctions
- Never wash or rinse articles of clothing treated with benzene, thinner, alcohol or other volatile or organic solvents. The presence of such chemicals can result in a fire
- Do not use water with temperature over 50°C. Water that is too hot can cause malfunctions and deformation of the machine
- If it takes 15 seconds or more for the machine to stop moving completely after the lid is opened (during Spin cycle with laundry in the basket), the brake is malfunctioning. You should have the machine repaired immediately
- Do not use this product for business purpose
- Young children should be supervised to ensure that they do not play with the appliance
- Remove coins and pins from the pockets etc. as these may damage clothes or the machine
- Disconnect the Power Plug when the supply voltage is very high and very low. The machine will detect automatically when supply voltage is very high or very low and display the errors. If supply voltage is more than 285Vac High, Medium, Strong & Auto LEDs blink together. If the supply voltage is lesser than 160Vac Low, Minimum, Rinse & Spin LEDs blink together



*The images are for representation purpose only.

HOW TO MAINTAIN

Water inlet

If the water fills into the basket too slowly. Remove the water supply hose and clean the filter with a brush as shown alongside.

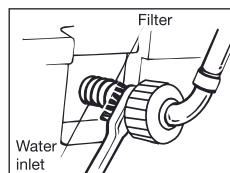
Washing machine body

Before doing any maintenance on your washing machine, be sure to remove the electrical plug from its power source.

Clean the main body and control panel with a soft cloth. Hard-to-remove dirt can be cleaned by wiping with a soft cloth soaked in a mild detergent.

Caution:

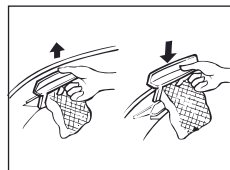
Do not clean the body or control panel with benzene, thinner, cleanser or other chemical cleaners. This can discolour or damage your machine's finish.



The lint collector

Clean the lint collector after every use.

- Remove the lint collector by pulling it out. If it is difficult to lift it out at the place where the machine has stopped, turn the basket by hand to a more convenient place and remove the lint collector.
- Remove the lint by turning the lint collector inside out
- When the lint collector has been emptied and cleaned, push the net back in and replace the lint collector by inserting it in from above and pressing it down into place



*The images are for representation purpose only.

Caution:

- The net of the lint collector may sometimes be lifted up and may lie on top of the basket. Do not operate the washing machine with the net lying over the basket, as this may cause the net to rip or cause malfunction.
- If the net is damaged, contact your nearest dealer

WHEN DO YOU CALL THE SERVICE PERSON

Before you call the service person, please check the following:

When your washing machine does not operate,

Check

- Has your machine's plug been inserted properly into the main power supply socket?
- Is the water tap turned on properly?
- Has the drainage hose been placed down to allow drainage?
- Is the power switch ON?
- Is the lid securely closed? (When beginning operation from the SPIN cycle, your machine will not operate if the lid is open.)
- Is the laundry load unbalanced? Is the warning light ON? If so, correct unbalanced load by manually rearranging the laundry evenly.

When your washing machine leaks,

Check

- Is the hose coupling loose?
- Is the nozzle loose?
- Is the water feed hose connector clogged?
- Is the water inlet nut loose?

When your washing machine makes an unusual noise,

Check

- Is your washing machine installed on an incline or uneven surface?
- Are there any match sticks, hairpins or metal objects being washed with the laundry?
- Is the load unbalanced, causing the basket to spin off-centre?

When your washing machine does not drain,

Check

- Has the WASH-RINSE cycle been selected?
- Is the drainage hose bent?
- Has the drainage hose been placed down to allow proper drainage?
- Is the drainage hose properly connected to your machine?

When the washing cycle takes the longer than usual,

Check

- Has the automatic load unbalance correction function (Fill – Agitate – Drain) been activated to correct a load unbalance?
- Is the water intake pressure less?

DON'T WORRY WHEN

- A small amount of water drains out of the drainage hose the first time you use your washing machine. This is merely the water left over from the performance inspection performed on your washing machine before it was shipped from the factory.
- Buzzing noises occur when the tub fills with water. They are caused by the operation of the water supply valve.
- Sloshing sounds are made by your machine during the Spin cycle. These are made by the water in the Liquid Balancing Ring which is meant to maintain balance of the Spin Tub and does not indicate a malfunction.
- When you restart your machine after opening the lid or pausing the machine during the Spin cycle, there may be a small pause before the machine begins to spin as the drainage valve opens. Also, when you start your machine immediately after stopping it, there will be a short pause. This happens for safe operation.

TROUBLE SHOOTING

Trouble Indication	Kind of Trouble	Where to Check	How to Resolve the Problem
No LED glow on Panel or No movement inside Machine	The Washer does not work at all	Check the power cord is securely plugged in	
		Press the Power ON/ OFF button	
		Press the Start/ Pause button	
		Check whether power failure has occurred	
		Check the main power fuse or circuit breaker has been activated	
High, Medium, Low & Min LEDs blink 1 by 1	Water does not flow into wash/ spin tub in 15 min. LEDs will blink (along with beeps for some time)	Check whether the tap is opened	Check and resolve the problem, then open & close the lid to restart the washer
		Check whether the water supply hose is frozen	
		Check whether the water supply hose or the metal filter in the water inlet is blocked	
		Check whether the water is out of supply	
Min water level & Spin LEDs (as a pair) blink together followed by Low & Rinse, followed by Medium & Auto and then by High & Strong	If the water does not drain from machine the LED pairs will blink (along with beeps for some time) after 10 minutes of starting drain operation	Check whether the outfall is too high	Check and resolve the problem, then open & close the lid to restart the washer
		Check whether the drain hose is placed correctly	
		Check whether the drain hose is blocked by scrap or fibre	
		Check whether the drain hose is too long or bend	
Strong, Auto, Rinse & Spin Wash LEDs blink together	During spin operation if the lid is open, LEDs will blink together (along with beeps for some time)	Check whether the lid is open during spinning	Close the lid to restart the washer
Strong, Auto, Rinse & Spin 4 LEDs blink one by one	If there is load unbalance for two times, the machine will try to balance it out automatically by in taking water. If machine goes into unbalance third time, LEDs will blink one by one (along with beeps for some time)	Check whether the washing machine is placed steadily	Balance the clothes evenly and close the lid to restart the washer
		Check whether the cloth load is appropriate	
		Check whether the clothes are spread out evenly in the wash basket	
High, Medium, Strong & Auto LEDs blink together	If input voltage from your socket is very high above 280V, LEDs will blink together (along with beeps)	Check the voltage in power socket for proper operating voltage and unplug the machine to avoid further damage	Wait till your input voltage becomes normal
Low, Minimum, Rinse & Spin LEDs blink together	If input voltage from your socket is very low below 160V, LEDs will blink together (along with beeps)		

ENVIRONMENT & ENERGY CONSERVATION SUGGESTIONS:

Disposal of Packaging Material

After installing the washing machine, recycle/ reuse the corrugated box. Fitments and polythene cover/ straps - Do not dispose them off as garbage. This helps to conserve natural resources and prevents pollution.

Energy Conservation Tips for Washing Machine Use

You can help save limited natural resources like oil and coal by saving electricity. Simply follow these guidelines.

1. Use the correct quantity of water depending on the quantity of clothes to be washed.
2. Use less foam making detergent for washing and use the correct quantity of detergent.
3. Use the correct cycle. This helps in saving electricity.
4. At the end of the cycle, please switch off the machine from mains.
5. Reuse the soap water if possible. Please follow the instructions for reuse of soap water.

BRANCH ADDRESSES / SERVICE CONNECT

For any further assistance, please contact our nearest branch office or service centre:

Branch	Branch Addresses	Service Connect
Ahmedabad	4 th Floor, APM Shopping Mall Near IOCL Petrol Pump, Shyamal-Karnavati 100 Ft. Road, Satellite, Ahmedabad - 380 015.	<p style="text-align: center;">Call • 1800-209-5511 (Toll-Free)</p>
Bangalore	3 rd Floor, The Karnataka Film Chamber of Commerce Bldg, 28, 1st Main, Crescent Road, High Grounds Nr. Shivanand Circle, Bangalore - 560 001.	
Bhopal	217, Zone I, M.P. Nagar, Beh. Jyoti Talkies, Bhopal - 462 011.	
Bhubaneswar	Highway Complex NH-5, Rudrapur, Bhubaneswar - 752 101.	
Chandigarh / Mohali	Plot No.A-40, Phase-VIII-A, Industrial Area, Mohali - 160059.	
Chennai	No.1, Sidco Industrial Estate. Ambattur, Chennai - 600 098.	
Coimbatore	585-590, Sathya Towers 3 rd floor, D.B. Road R.S. Puram, Coimbatore - 641 002.	
Delhi	Godrej Bhavan, 2 nd Floor, Shershah Suri Marg, Okhla, New Delhi - 110 065.	
Faridabad	Godrej Bhavan, 2 nd Floor, Shershah Suri Marg, Okhla, New Delhi - 110 065.	
Ghaziabad	Godrej Bhavan, 2 nd Floor, Shershah Suri Marg, Okhla, New Delhi - 110 065.	
Guwahati	Godrej Building, G.S.Road, Ulubari, Flyover, Guwahati - 781 007.	
Hyderabad	201 & 202, Lala-1 Land Mark, 5-4-94 to 97, 2nd Floor, Above Digital Shoppy, Ranigunj, M.G. Road, Secunderabad - 500 003.	
Jaipur	502-506, 5 th Floor, Gaurav Towers, Malviya Nagar, Jaipur-302 017.	
Kochi	2 nd Floor, Angels' Arcade South Kalamassery, Near CUSAT Signal Ernakulam - 682022.	
Kolkata	Block GN, Sector V, Salt lake, Kolkata - 700 091.	
Lucknow	C 3/3 & C3/4, Sanjay Complex Behind Akashwani Bhawan, Vidhan Sabha Marg Lucknow - 226001.	
Mumbai	Appliance Divn., Plant 4, Pirojshanagar, Vikhroli, Mumbai - 400079.	
Nagpur	Dr. Bhiwapurkar Chamber 2nd Floor, Opp: Yashwant Stadium Dhantoli, Nagpur - 440012.	
Patna	Jeevan Deep Bldg. Exhibition Road, Patna - 800 001.	
Pune	Apollo Building Square, Plot No.60, Survey No.599 Sahaney Sujan Park, Lullanagar, Bibewadi Road, Pune - 411 040.	
Raipur	9/1, Besides Bharat Petrol Pump Opp: Hotel Picadelly, Mahoba Bazaar, GE Road, Raipur - 492001.	
Ranchi	C/o. Surya Motors, Near Krishi Bazaar Samiti Pandra, Ranchi (Jharkhand) - 835 222.	

Website: www.godrejsmartcare.com & www.godrejappliances.com
 E-mail: smartcare@godrej.com SMS: <godrej> <space><care> to 53636

WARRANTY WASHING MACHINES

The Godrej Fully Automatic Washing Machine comes with 10 years warranty on the wash motor and 2 years warranty on all other parts from the date of purchase, against defective material or workmanship. In case of any such defect, Godrej & Boyce Mfg. Co. Ltd. - Appliance Division undertakes to get the appliance repaired free of charge during warranty period, subject to terms and conditions below.

INSTRUCTIONS FOR THE CUSTOMER

1. Kindly ensure that the dealer fills the warranty card correctly and completely.
2. You should retain the warranty card for record and produce the same in the event of any warranty repairs.
3. In the event of a defect developing in the product, contact the nearest authorised Godrej & Boyce Service Centre for obtaining warranty service and provide the defect, Model details & Serial No.
4. Product will function between +/- 5% of rated volts. For any fluctuation beyond specified limit, company shall not be responsible. In turn, warranty stands terminated.
5. Earthing provision is necessary for the safety.
6. Frequency must be between 5% variation of 50Hz. Beyond this, company shall not be liable for any unforeseen hazards like fire, shock etc. & in turn, warranty stands terminated.
7. Appliance or any part thereof is subjected to neglect, abuse or misuse, tampering, alteration, accident, fire, floods or other act of God, or damage by rodents or insects, the COMPANY is not responsible for any damage caused to the appliances & shall not be liable for any consequential loss or compensation, not refund of purchase price or replacement of the appliances.
8. In event of repair/replacement of any part/s of the unit, this warranty will thereafter continue and remain in force only for the unexpired period of warranty. Moreover, the time taken for repair/ replacement and in transit whether under the warranty or otherwise shall not be excluded from the warranty period.
9. Water supply required above 0.5 bar i.e. 7.25 PSI to operate the Fully Automatic washing machine. Without this, company shall not be able to install the product.
10. Any damage/defect arising due to entry of coin/foreign particle into the machine, and causes malfunctioning is not covered under warranty. These calls will be chargeable to customer during warranty period.
11. House wiring related issues are not covered under warranty and such calls will be chargeable to customer.
12. Calls related to lint filter or water inlet filter cleaning are not covered under warranty and are chargeable to customer.

TERMS AND CONDITIONS

1. Repairs and replacement of parts will be carried out through the Authorised Customer Service Centre.
2. All transportation and handling expenses incurred while repairing will be payable by the customer.
3. For appliances installed beyond the municipal limits of the jurisdiction of the authorised service centre, charges towards technician's visit and other incidentals will be borne by the customer.
4. While the company will make every effort to carry out the repairs at the earliest, it however is made expressly clear that the company is under no obligation to do so in a specified period of time.
5. The company/ its authorised service centre will collect any parts, components replaced.
6. Warranty does not cover accessories to the appliance.
7. The Company's obligation under this warranty shall be limited to repair or providing replacement of part/s only.
8. In the event of any unforeseen circumstances, and spares not being available, the company's prevailing depreciation rules will be binding on the purchaser to accept as a commercial solution in lieu of repairs.
9. Warranty is not applicable in case the original number (serial no. sticker) is removed, obliterated or altered from the machine or cabinet.

Godrej & Boyce Mfg. Co. Ltd.- Appliance Division

CUSTOMER COPY

MODEL NO.
UNIT SR. NO.

DATE OF PURCHASE

CUSTOMER'S NAME & ADDRESS

TEL. _____

DEALER'S NAME & ADDRESS

TEL. _____

Customer's Signature:

This warranty is valid only if it is filled in and stamped by our authorised dealer stating the date of purchase. Warranty Voids If: 1. The warranty card is not completed properly at the time of purchase. 2. The completed warranty card is not presented to the authorised personnel at the time of service of the product. 3. The appliance is not operated according to instructions given in the 'User Guide'. 4. Defects are caused by improper use, which shall be determined by the company's authorised personnel. 5. Unauthorised persons carry out any repair work. 6. Defects are caused by reasons beyond control, like abnormal voltage, acts of God or while in transit to service centre or purchaser's residence. 7. The warranty is not valid in case the serial number is deleted, defaced or altered. 8. Damage to the appliance or any parts due to transportation or shifting is not covered by the warranty. 9. The warranty automatically expires after 24 months from the original date of purchase, even if the appliance may not have been in use for any time for whatever reasons during the warranty period.



Protection of Environment:

Protection of environment™ is one of the core values of Godrej and we seek your co-operation to make sure that the product, packaging and plastic material is not disposed as unsorted municipal waste.



This symbol is known as the "Crossed-out Wheellie Bin Symbol". It means that the product should not be disposed of with your general house-hold waste.

It should be disposed of only through the company's collection points with special treatment so as to prevent any damage to the environment. Please call: **1800 209 5511** for applicable buy back arrangement or visit: www.godrejappliances.com/green-think for details about Godrej Appliances authorised collection points.

Godrej | APPLIANCES