

EVE N.C.R.



Quick Start Guide

Godrej | SECURITY SOLUTIONS

Regulatory Information

This device complies with Part 15 of the FCC Rules. Operation is subject to the following two conditions:

- (1) This device may not cause harmful interference, and
- (2) This device must accept any interference received, including interference that may cause undesired operation.

Note: This product has been tested and found to comply with the limits for a Class B digital device, pursuant to Part 15 of the FCC Rules. These limits are designed to provide reasonable protection against harmful interference in a residential installation. This product generates, uses, and can radiate radio frequency energy and, if not installed and used in accordance with the instructions, may cause harmful interference to radio communications. However, there is no guarantee that interference will not occur in a particular installation. If this product does cause harmful interference to radio or television reception, which can be determined by turning the equipment off and on, the user is encouraged to try to correct the interference by one or more of the following measures:

- Reorient or relocate the receiving antenna.
- Increase the separation between the equipment and receiver.
- Connect the equipment into an outlet on a circuit different from that to which the receiver is connected.
- Consult the dealer or an experienced radio/TV technician for help.

Please take attention that changes or modification not expressly approved by the party responsible for compliance could void the user's authority to operate the equipment. This equipment should be installed and operated with a minimum distance 20cm between the radiator and your body

Packing List



Network Camera Recorder (x1)



Power Adapter (x1)



Quick Start Guide (x1)



Power Cable (x1)



Network Cable (x1)

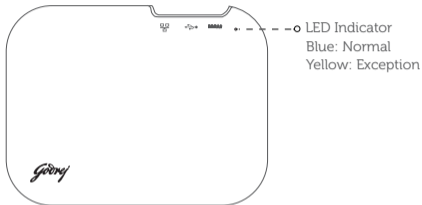


HDD Rubber Case (x2)
(For 2.5", 9mm thick HDD)

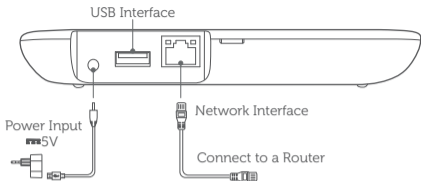
-  • The figures in this manual are for reference only and may differ from the actual product.

Appearance

Front Panel



Interface Part 1



-  The network cable is not included in the package. It should be prepared separately.

Interface Part 2



To reset the settings: Press and hold the RESET button with a needle for as least 3 seconds when the device is powered on, and release until the LED indicator flickers quickly.

About this Manual

The Manual includes instructions for using and managing the product. Pictures, charts, images and all other information hereinafter are for description and explanation only. The information contained in the Manual is subject to change, without notice, due to firmware updates or other reasons.

Legal Disclaimer

Regarding the product with internet access, the use of product shall be wholly at your own risks. Our company shall not take any responsibilities for abnormal operation, privacy leakage or other damages resulting from cyber attack, hacker attack, virus inspection, or other internet security risks; however, our company will provide timely technical support if required. Surveillance laws vary by jurisdiction. Please check all relevant laws in your jurisdiction before using this product in order to ensure that your use conforms to the applicable law. You further agree that this product is only for civil use, and Godrej shall not be liable in the event that this product is used with illegitimate purposes, such as third-party rights infringement, medical treatment, safety equipment or other situations where the product failure could lead to death or personal injury, or weapon of mass destruction, chemical and biological weapon, nuclear explosion, and any unsafe nuclear energy uses or anti-humanity usages. You should undertake all responsibilities for losses or damages resulting from the above usages whatsoever. In the event of any conflicts between the above and the applicable law, the later prevails.

The purpose of the Products is to provide an adequate warning in the event of illegal encroachment in certain area; however, the proper installation of the Products will not eliminate, but only reduce, that accidents will not occur or that there will be no personal injury or property loss as a result. You are highly recommended to raise your vigilance and strengthen the safety awareness in the daily life.

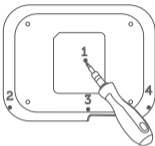
GODREJ does not undertake any liability for personal injury or property damage, as the result of product interruption or service termination cause by:

- a) improper installation or usage other than as requested;
- b) the protection of national or public interests;
- c) Force Majeure;
- d) yourself or the third party, including not limitation, using any third party's products, software, applications, and among others.

2.5-inch HDD Installation

1 Loosening the Screws

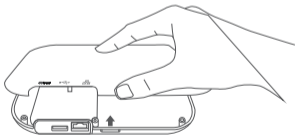
- Loosen the 4 screws on the base of the NCR with a screwdriver, as shown in the figure below:



i The No.1 screw is behind the label.

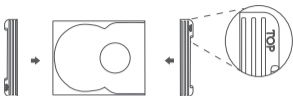
2 Opening the Cover

- Open the cover at the groove according to the direction of arrow, as shown in the figure below:



3 Installing the HDD Rubber Case

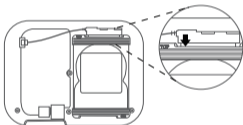
Cover the rubber case on the two sides of the HDD, as shown in the figure below.



- i** For a 9mm thick HDD, the TOP mark of the rubber case should be facing upward when installing .

4 Installing the HDD

Connect the HDD cable to the HDD and place the HDD in the designated position, as shown in the figure below.



5 Completing Installation

Replace the cover and fasten the 4 screws in the step 1 and complete the installation.

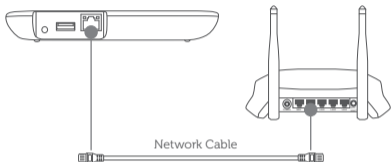
Operations

Step 1

Starting up the EVE NCR

1 Connecting to the Network

Connect NCR to the router with a network cable.



i The NCR does not support the Wi-Fi network connection.

2 Power-on

Connect the NCR to the power adapter with a power cable, and connect to the power socket. The LED indicator turns solid blue when the NCR starts completely.

i The indicator turns solid yellow in the following cases:

- No installed HDD
- HDD error
- Device exceptions

Adding Devices



- 1** Installing the Godrej EVE App
- Download and install the Godrej EVE app from App Store or Playstore.
 - Launch the app and register for a Godrej EVE user account.
 - You can also use your existing Godrej EVE account. Login into the existing account using your user name & password.

- 2** Adding NCR to Godrej EVE account
- Log into the Godrej EVE app.
 - Click the "+" on the upper-right hand corner to add a device.
 - Scan the QR Code on the bottom of NCR.



- 3** Adding Wi fi Network Camera to Godrej EVE account
- You can also add Cube/ Mini /PT camera's by following procedure mentioned above

Completing Configuration

After adding the NCR and cameras to your Godrej EVE account, go to the storage status of camera and enable the NCR recording. NCR will start the 24 x 7 continuous recording of cameras.

 The X3 supports up to 8 cameras recording.

Godrej EVE Cloud

Certain functions of this product (including but not limited to live view, recording, and remote playback) depend upon the Internet connection. To learn more about these functions, visit the Godrej EVE website www.eve.godrejsecure.com and register for a new account.

EU Conformity Statement



This product and - if applicable - the supplied accessories too are marked with "CE" and comply therefore with the applicable harmonized European standards listed under the EMC Directive 2004/108/EC, the RoHS Directive 2011/65/EU



2012/19/EU (WEEE directive): Products marked with this symbol cannot be disposed of as unsorted municipal waste in the European Union. For proper recycling, return this product to your local supplier upon the purchase of equivalent new equipment, or dispose of it at designated collection points. For more information see: www.recyclethis.info.



2006/66/EC (battery directive): This product contains a battery that cannot be disposed of as unsorted municipal waste in the European Union. See the product documentation for specific battery information. The battery is marked with this symbol, which may include lettering to indicate cadmium (Cd), lead (Pb), or mercury (Hg). For proper recycling, return the battery to your supplier or to a designated collection point. For more information see: www.recyclethis.info.

Industry Canada ICES-003 Compliance

This device meets the CAN ICES-3 (B)/NMB-3(B) standards requirements.

This device complies with Industry Canada licence-exempt RSS standard(s). Operation is subject to the following two conditions:

- (1) this device may not cause interference, and
- (2) this device must accept any interference, including interference that may cause undesired operation of the device.

This equipment should be installed and operated with a minimum distance 20cm between the radiator and your body.

Safety Instructions

These instructions are intended to ensure that a user can use the product correctly to avoid danger or property loss.

The precaution measure is divided into "Warnings" and "Cautions"

Warnings: Serious injury or death may occur if any of the warnings are neglected.

Cautions: Injury or equipment damage may occur if any of the cautions are neglected.

	
Warnings: Follow these safeguards to prevent serious injury or death.	Cautions: Follow these precautions to prevent potential injury or material damage.

Warnings

- Proper configuration of all passwords and other security settings is the responsibility of the installer and/or end-user.
- In the use of the product, you must be in strict compliance with the electrical safety regulations of the nation and region. Please refer to technical specifications for detailed information.
- Do not connect several devices to one power adapter as adapter overload may cause over-heating or a fire hazard.
- Please make sure that the plug is firmly connected to the power socket. When the product is mounted on wall or ceiling, the device shall be firmly fixed.
- If smoke, odor, or noise rise from the device, turn o the power at once and unplug the power cable, and contact the service center.

Cautions

Make sure the power supply voltage is correct before using the camera.

- Do not drop the camera or subject it to physical shock.
- Do not touch sensor modules with fingers. If cleaning is necessary, use a clean cloth with a bit of ethanol and wipe it gently. If the camera will not be used for an extended period, replace the lens cap to protect the sensor from dirt.
- Do not aim the camera at the sun or extra bright places. Blooming or smearing may occur (which is not a malfunction), and aect the sensor's endurance at the same time.

- The sensor may be burned out by a laser beam, so when any laser equipment is in use, make sure that the surface of sensor will not be exposed to the laser beam.
- Do not place the camera in extremely hot, cold (the operating temperature shall be -10°C to +40°C), dusty, or damp locations, and do not expose it to high electromagnetic radiation.
- To avoid heat accumulation, ensure that there is good ventilation to the device.
- Keep the camera away from liquids.
- While in delivery, pack the camera in its original, or equivalent, packing, packing materials. Or packing of the same texture.
- Regular part replacement: a few parts (e.g. electrolytic capacitor) of the equipment shall be replaced regularly according to their average endurance. The average time varies because of differences between operating environments and usage history, so regular checking is recommended for all users. Please contact your dealer for more details.
- Improper use or replacement of the battery may result in hazard of explosion. Replace with the same or equivalent type only. Dispose of used batteries according to the instructions provided by the battery manufacturer.
- If the product does not work properly, please contact your dealer or the nearest service center. Never attempt to disassemble the camera yourself. (We shall not assume any responsibility for problems caused by unauthorized repair or maintenance.)