

# CELESTE

User Instructions



(Available in 2 sizes - 8 ltrs & 14 ltrs)

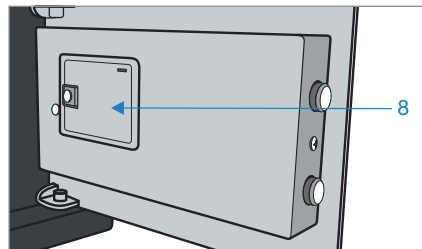
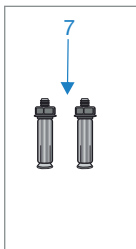
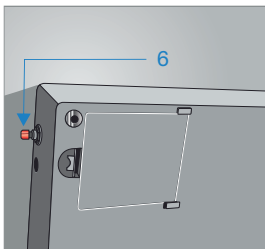
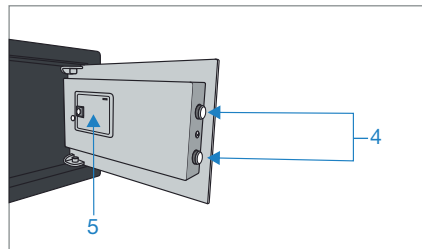
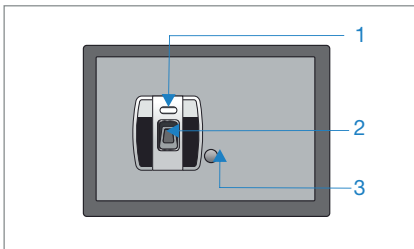
# TABLE OF CONTENTS

<b>1.</b>	<b>Introduction.....</b>	<b>2</b>
1.1.	Know your safe.....	0
1.2.	Features.....	0
1.3.	Important instructions.....	0
<b>2.</b>	<b>Mounting.....</b>	<b>0</b>
2.1.	Mounting tips and precaution.....	0
<b>3.</b>	<b>Typical Safe Operations.....</b>	<b>0</b>
3.1.	Opening the safe.....	0
3.2.	Closing the safe.....	0
3.3.	Finger Placement.....	0
3.4.	Registering Fingerprints.....	0
3.5.	Deleting the registered fingerprints.....	0
3.6.	Testing and replacing the batteries.....	0
3.7.	Error messages.....	0
<b>4.</b>	<b>Mechanical override key instructions.....</b>	<b>0</b>
<b>5.</b>	<b>Information on E-waste handling and management.....</b>	<b>0</b>

# 1.INTRODUCTION

## 1.1 KNOW YOUR SAFE

1. Start Button
2. Biometric fingerprint reader
3. Rubber cover for mechanical override keyhole
4. Motorized Shooting Bolts
5. Battery Compartment
6. Reset/ Enroll button
7. Mechanical Override key
8. Anchor Bolts
9. Power Indicator LED
- 10) OK Indicator LED
- 11) NO Indicator LED



**Note:** Reset/Enroll Button is used to register and delete fingerprints.

## 1.2 FEATURES

- 1) Solid, arc-welded heavy-gauge steel construction
- 2) 18 mm solid steel bolt for maximum security and durability
- 3) Optical Biometric Fingerprint Sensor
- 4) Fast and Accurate Verification
- 5) Upto 32 Fingerprints Capacity
- 6) Powered by 4\*AA 1.5V Alkaline battery
- 7) Low battery indication
- 8) Interior Carpet
- 9) Pre-drilled mounting holes
- 10) Mechanical Override key

## 1.3 IMPORTANT INSTRUCTIONS

- Please keep this manual and override keys safely (NOT INSIDE THE SAFE).
- DO NOT use any liquid while cleaning the keypad, you can use a damp cloth if required.
- Make sure the safe is anchored properly as it can fall and hurt people and property.
- DO NOT place any liquid on top of the safe, a spill on the keypad may render the safe inoperable.
- DO NOT overstuff the safe or you can damage the motor mechanism or the contents.
- DO NOT open the back cover or try to repair the safe yourself. In case of any problem contact GSS call center at 1800 20 999 55.

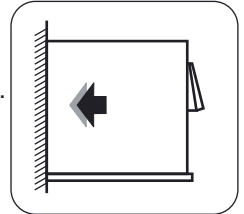
## 2. MOUNTING

### Mounting through the bottom of the safe:

- Check for the type of floor (wood, tile, concrete).
- Get the appropriate anchors for the type of floor.
- Check location on floor for concealed wires or pipes.
- Mark the floor to drill for your anchor.
- Drill the appropriate size hole for the anchors.
- Mount the safe and make sure it is secure.
- For mounting to the top of a cabinet you may want to use carriage bolts through the top of the cabinet.
- DO NOT mount to a shelf in a cabinet or closet without anchoring to wall behind the safe.

### Mounting through the back of the safe:

- Check the wall or cabinet for structural soundness.
- For safety, take someone's help to hold the safe during mounting.
- Check location for concealed wires or pipes.
- Mark the surface to drill holes for the anchors you will be using.
- Drill the appropriate size holes for the anchors you are using.
- Ensure someone hold the unit while the safe is anchored to the wall.
- Test the strength of the mounted safe so it will not fall off the wall or cabinet.
- DO NOT place safe on a shelf without proper mounting into the wall.



## 2.1 MOUNTING TIPS AND PRECAUTIONS

- The safe may be mounted to a wall or the inside of a cabinet or on the floor.
- When mounting to a wall or cabinet, be sure of the load bearing so as to hold the weight of the safe and the contents.

(Failure to do so could result in the safe falling and damaging property and hurting people)

## 3. TYPICAL SAFE OPERATIONS

### 3.1 OPENING THE SAFE

#### 3.1.1 BEFORE REGISTERING FINGERPRINT: (IN FACTORY DEFAULT CONDITION)

1. Press the Start Button, the power indicator LED will light up. A short beep will be heard and red LED from the fingerprint reader will be lit..
2. Place any finger on the fingerprint reader within 5 seconds.
3. If the fingerprint is confirmed, “OK” indicator LED will light up along with a long beep and then the shooting bolts will retract. A short beep will be heard when the bolts are retracted fully. Pull the door to open the safe. If the fingerprint is not confirmed, “NO” indicator LED will light up three times along with three short beeps and the safe will not be opened.

#### 3.1.2 AFTER REGISTERING FINGERPRINT:

(Refer section 3.3 and 3.4 for finger placement and registering fingerprints.)

1. Press the Start Button, the power indicator LED will light up. A short beep will be heard and red LED from the fingerprint reader will be lit..
2. Place registered finger on the fingerprint reader within 5 seconds.
3. If the fingerprint is confirmed, “OK” indicator LED will light up along with a long beep and then the shooting bolts will retract. A short beep will be heard when the bolts are retracted fully. Pull the door to open the safe. If the fingerprint is not confirmed, “NO” indicator LED will light up three times along with three short beeps and the safe will not be opened.

**Note:** If wrong fingerprint is placed for consecutive 8 times then the safe will go in lockout mode for a period of 5 minutes. “NO” indicator LED will light up three times along with three short beeps on each wrong attempt. After 8th wrong attempt, “OK” indicator LED will light up at an interval of 1 second until the safe is in lockout mode. After 5 minutes, user can again attempt 8 times to open the safe.

### 3.2 CLOSING THE SAFE

Close the door, press the Start button and a short beep will be heard. The power indicator LED will light up followed by “OK” indicator LED. The bolts will extend fully followed by a short beep and the door will be closed. Pull the door to ensure the safe is closed.

### 3.3 FINGER PLACEMENT

1. Place a finger such that it completely covers the sensor area with maximum contact.
2. It is recommended to use an index finger or middle finger.
3. Thumb, ring or little finger is more difficult to place in a correct position.
4. Place core part of a fingerprint to the center of the sensor.
5. If a finger is placed as in the right picture, only a small area of finger is captured. So it is recommended to place a finger as shown in the left picture.
6. For the case when an enrolled fingerprint cannot be used due to injury or holding a baggage, it is recommended to enroll more than two fingers per user.



#### Tips for different fingerprint conditions

Godrej's fingerprint products are designed to scan fingerprint smoothly regardless of the conditions of a finger skin. However, in case a fingerprint is not read well on the sensor, please refer to the followings tips.

1. If a finger is stained with sweat or water, scan after wiping moisture off.
2. If a finger is covered with dust or impurities, scan after wiping them off.
3. If a finger is way too dry, place after blowing warm breath on the finger tip.

### 3.4 REGISTERING FINGERPRINT

The safe must be in opened condition.

1. Press the "Reset/Enroll Button" located at the back of door (near the door hinge), the power indicator LED will light up. "OK" indicator LED will light up along with one short beep and one long beep. The red LED from the fingerprint reader will be lit..
2. Put any finger on the sensor screen within 5 seconds. If the fingerprint is successfully registered, "OK" indicator LED will light up followed by a long beep. If not, "NO" indicator LED will light up three times along with three short beeps. If no finger is placed on the sensor screen within 5 seconds, "NO" indicator LED will light up three times along with three short beeps.
3. Keep the door open and verify the fingerprint 3-4 times as per section 3.1.2 before closing the door.
4. If more fingerprints needs to be registered then repeat the above mentioned steps. A maximum of 32 fingerprints can be registered.

**Note:**

1. Finger should not be removed from the sensor until “OK” indicator LED lights up and a long beep is heard.
2. After registering 32 fingerprints, “OK” indicator LED will light up along with a short beep and then “NO” indicator LED will light up two times along with two short beeps indicating that no more fingerprints can be registered.

### 3.5 DELETING THE REGISTERED FINGERPRINTS

Safe will be in factory default condition once all the fingerprints are deleted. The safe must be in opened condition.

1. Keep the "Reset/Enroll Button" pressed for around 5 seconds. The power indicator LED will light up. After 5 seconds, “OK” indicator LED and “NO” indicator LED will light up alternatively. (A short beep will be heard whenever “Reset/Enroll Button” is pressed.)
2. Release the "Reset/Enroll Button" after a long beep is heard. A long beep indicates that all the registered fingerprints have been deleted successfully.

Note: Fingerprints cannot be deleted one by one or any particular fingerprint. All registered fingerprints will be deleted and now open the safe with any fingerprint as per section 3.1.1. To register fingerprints, refer section 3.4.

### 3.6 TESTING AND REPLACING THE BATTERIES

**Test Battery Level:**

If battery is low then “NO” indicator LED will light up five times along with 5 short beeps while opening and closing the safe. Replace the batteries immediately as per procedure mentioned below:

**Replacing the Batteries:**

1. Open the safe.
2. Remove the battery cover on the back panel.
3. Remove all four used batteries. (DO NOT forcibly remove the batteries. Push positive terminal of the battery towards the spring end to remove the batteries.)
4. Replace the batteries with four 1.5V AA size alkaline batteries.
5. Put back the battery cover.
6. Keeping the door open, test the safe to make sure it works.
7. Dispose the used batteries in an environment friendly way.

**Note:** If the batteries are dead, open the safe using mechanical override key.



## 3.7 ERROR MESSAGES

- Access denied condition: If the safe is tried to be opened using an unregistered fingerprint, “NO” indicator LED will light up three times along with three short beeps.
- Error while opening and closing: If the shooting bolts failed to retract or extend fully then “NO” indicator LED will light up three times along with three short beeps. Push the door towards the inside while opening the safe with fingerprint. Shooting bolts fails to extend fully likely because the safe is too full. Redistribute the contents or remove something to allow the door to close completely. Push the door to close it fully before pressing the Start Button. If you still cannot open or close the safe then contact GSS call center on 1800 20 999 55.
- Lockout Condition: If the safe is tried to be opened 8 times consecutively with unregistered fingerprint, the safe will be in lockout mode for a period of 5 minutes. “NO” indicator LED will light up three times along with three short beeps on each wrong attempt. After 8th wrong attempt, “OK” indicator LED will light up at an interval of 1 second until the safe is in lockout mode. (In lockout period, the fingerprint sensor does not activate when the button above the fingerprint sensor is pressed.)

## 4. MECHANICAL OVERRIDE KEY INSTRUCTIONS

1. Locate and open the rubber cover (Right side of Biometric fingerprint reader).
2. Insert the mechanical override key into the slot and turn clockwise to open the safe.
3. While the door is open, follow the deleting the registered fingerprints procedure and register fingerprints again. (Refer section 3.4 and 3.5)

### **Note:**

1. After deleting old fingerprints and registering new fingerprints, press Start Button to close the safe. Key will rotate to the locked position and then key can be removed. Alternatively, the key can be rotated counter clockwise to close the safe.
2. The safe can be opened in lockout period with the help of mechanical override key.
3. Mechanical key cannot be removed from the slot when the safe is in open condition.

### **WARNING:**

Keep the override keys in a safe place other than inside this safe. These keys are to be used in emergencies.

## 5. INFORMATION ON E-WASTE HANDLING AND MANAGEMENT

Dear Customer,

The Ministry of Environment and Forests have published The E-waste (Management and Handling) Rules 2010 which comes in effect from 1st May 2012.

E-waste is defined as any electrical or electronic component of products in whole or in part, or rejects from their manufacturing or repair process which are intended to be discarded.

These rules apply to every producer; consumer or bulk consumer involved in the manufacture, sale, and purchase and processing of electrical and electronic equipment or components as specified in Schedule 1 (please refer to our website [www.godrej.com](http://www.godrej.com) in the 'Good & Green' section of CSR module for more details).

Under these rules, specific roles and responsibilities are defined for producers, consumers and recyclers handling and managing e-waste.

E-waste is to be managed in an environmentally sound manner which means, taking steps to ensure that health and environment are protected from adverse effects of hazardous substance contained in such wastes.

Rule 6 of the E-waste (Management and Handling) Rules 2010 states that bulk consumers of electrical and electronic equipment shall be responsible for recycling of the e-waste generated by them. Bulk consumer means bulk users of electronic and electrical equipment such as Central Government or State Government Departments, public sector undertakings, banks, educational institutions, multinational organizations, and international agencies, private companies that are registered under the Factories act 1948 and Companies act 1956. The bulk consumers have to ensure that the e-waste generated by them is channelized to authorized collection centers or is taken back by the producers. They shall maintain records of e-waste generated by them in Form 2 and make such records available for scrutiny by the State pollution control or the Pollution control Committee concerned.

All consumers of electrical and electronic equipment irrespective of their status as bulk consumers or not, shall ensure that e-waste generated by them is channelized to authorized collection center(s) or registered dismantler(s), or recycler(s) or is returned to the pick-up/take back services provided by the producers. (Please refer to our website [www.godrej.com](http://www.godrej.com) in the 'Good & Green' section of CSR module for more details).

All our products intended to be recycled under the category of e-waste (as defined above) carry a label or stamp of the WEEE symbol (A wheelie bin with a cross), which states that it falls under the hazardous waste category and is not to be disposed along with normal garbage.

We seek your support in ensuring environmentally sound management of e-waste and aid us in sustaining our earth's natural resources and maintaining the earth's green cover intact for the benefit of our future generations.





## RECORD OF PURCHASE

Please fill your details below for future reference:

Date of Purchase: \_\_\_\_\_

Product Model: \_\_\_\_\_

Name & Address of Distributor/Dealer: \_\_\_\_\_

\_\_\_\_\_

\_\_\_\_\_

Distributor Phone Number: \_\_\_\_\_

FOR SAFETY, PLEASE READ THIS MANUAL PRIOR TO USE.



Godrej & Boyce Mfg. Co. Ltd.

Godrej Security Solutions

Regd. Office: Plant No. 17, Pirojshanagar, Vikhroli, Mumbai - 400 079.

Tel: 022-67961700/1800 Fax: 91-22-67961509

Toll-free: 1800 209 9955 | SMS 'GSS' to 53636 | Email: [secure@godrej.com](mailto:secure@godrej.com) | Visit: [www.godrejsecure.com](http://www.godrejsecure.com)

In view of the Godrej policy of continuous development and improvement, the dimensions and specifications may be changed without prior notice or obligation. The colours of the product in leaflet may not match the actual colours due to printing limitations.

An ISO 9001/ ISO 14001 / BS OHSAS 18001

Products Marketed and Serviced By Godrej & Boyce Mfg. Co. Ltd.